



**India Meteorological Department  
Earth System Science  
Organisation  
(Ministry of Earth Sciences)**

**HOURLY UPDATE ON SUPER CYCLONIC STORM 'AMPHAN'**

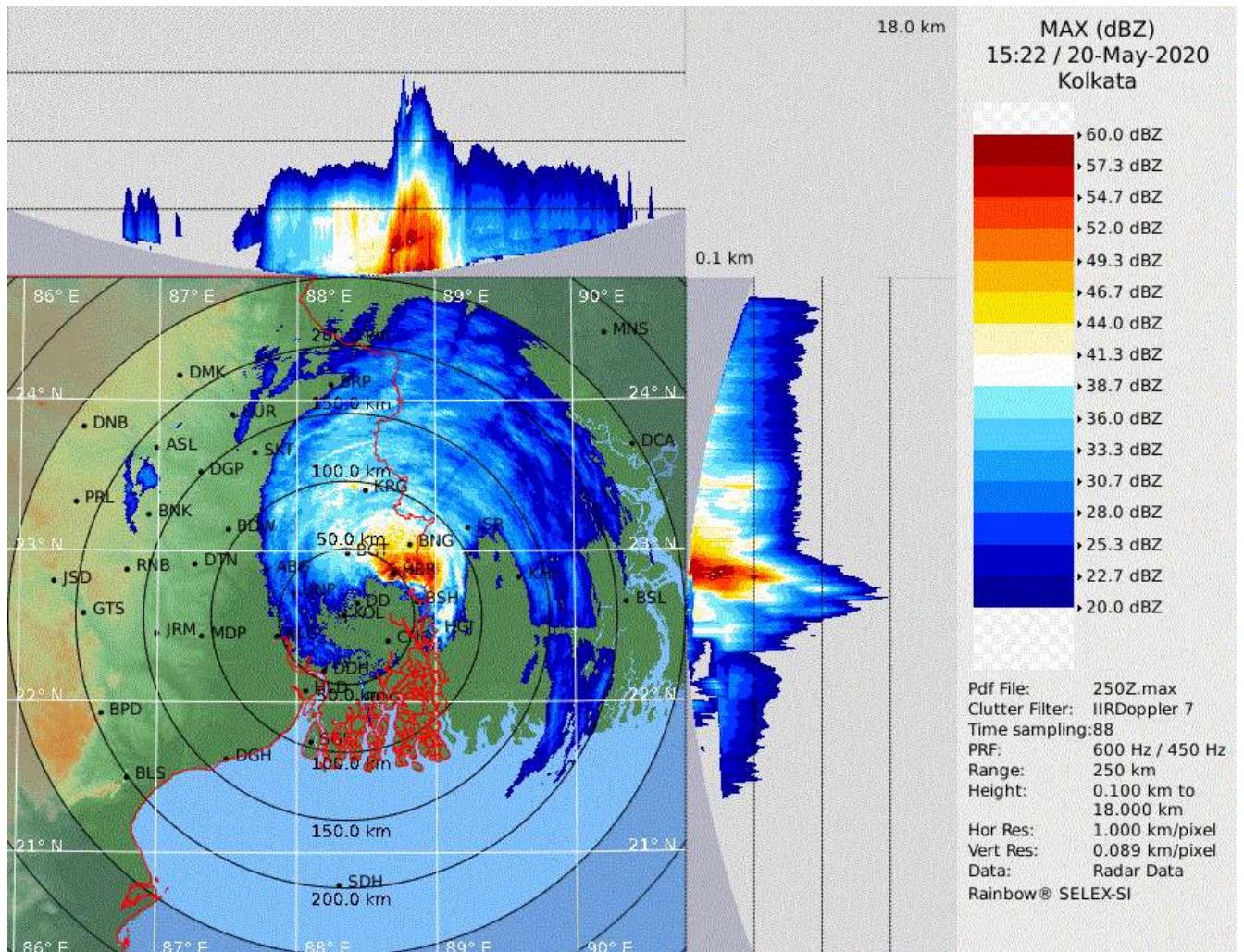
**BULLETIN NO. 16**

DATE: 20-05-2020

TIME OF ISSUE: 2120 HRS IST

DATE/TIME (IST) OF OBSERVATION	2030 HRS IST OF 20-05-2020 / 1500 UTC OF 20.05.2020
CURRENT LOCATION (LATITUDE/LONGITUDE)	<ul style="list-style-type: none"><li>THE VERY SEVERE CYCLONIC STORM LAY CENTERED AT 2030 HRS IST OF TODAY, THE 20TH MAY 2020 OVER WEST BENGAL NEAR <b>LAT. 22.7°N AND LONG. 88.6°E</b>, CLOSE TO KOLKATA.</li></ul>
CURRENT INTENSITY NEAR CENTER	120-130 KMPH GUSTING TO 145 KMPH.
OBSERVATIONS FROM THE COAST	<b><u>WIND-SPEED (KMPH):</u></b> <b>DUMDUM-100, KOLKATA-100, DIGHA-20,</b> <b><u>RAINFALL (IN MM SINCE 08:30 HOURS IST OF 20<sup>TH</sup> MAY 2020):</u></b> <b>KOLKATA-222.0, DUMDUM-194.0, DIGHA-87.0</b>
PAST MOVEMENT	MOVED NORTH-NORTHEASTWARDS WITH A SPEED OF 25 KMPH DURING PAST 06 HOURS.
FORECAST MOVEMENT, INTENSITY AND LANDFALL	<ul style="list-style-type: none"><li>SYSTEM WOULD CONTINUE TO MOVE NORTH-NORTHEASTWARDS AND CROSS WEST BENGAL-BANGLADESH BORDER IN THE EARLY HOURS OF 21<sup>ST</sup> MAY, 2020.</li><li>THE WIND SPEED WILL GRADUALLY DECREASE BECOMING 100-120 KMPH GUSTING TO 135 KMPH BY EARLY HOURS OF 21<sup>ST</sup> MAY, 2020.</li><li>THE WIND SPEED OF 110-120 KMPH GUSTING TO 135 KMPH IS PREVALING OVER HOWRAH, HOOGLI AND KOLKATA DISTRICTS DURING NEXT 2 HOURS. IT IS</li></ul>

GRADUALLY WEAKEN AND BECOME 80-90 KMPH  
GUSTING TO 100 KMPH BY EARLY HOURS OF 21<sup>ST</sup>, MAY  
AND 50-60 KMPH BY EARLY MORNING OF 21<sup>ST</sup> MAY, 2002



DWR RADAR KOLKATA



SAT : INSAT-3D IMG

20-05-2020/(1500 to 1526) GMT

IMG\_TIR1\_TEMP 10.8 um

20-05-2020/(2030 to 2056) IST

L1C Mercator

