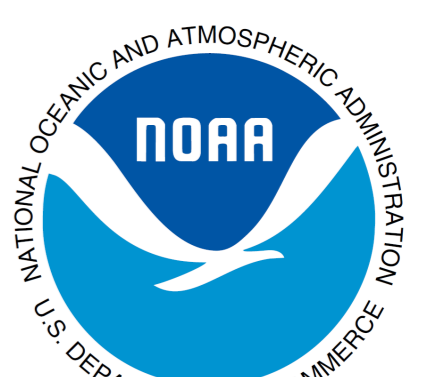


# VIIRS Atmospheric Products in the Community Satellite Processing Package (CSPP)

Geoff Cureton, Ray Garcia, Liam Gumley, Graeme Martin, Scott Mindock,  
Kathleen Strabala, Allen Huang

Cooperative Institute for Meteorological Satellite Studies  
Space Science and Engineering Center, University of Wisconsin - Madison  
1225 W. Dayton St., Madison, WI 53706, USA



## Overview

The Cooperative Institute for Meteorological Satellite Studies (CIMSS) has a long history of supporting the Direct Broadcast (DB) community for various sensors, recently with the International MODIS/AIRS Processing Package (IMAPP) for the NASA EOS polar orbiters Terra and Aqua. CIMSS has continued this effort into the NPP/JPSS (previously NPOESS) era with the development of the Community Satellite Processing Package (CSPP), supporting the Suomi NPP VIIRS, CrIS and ATMS sensors. In time it is intended that CSPP will support GOES-R, JPSS and other geostationary and polar orbiting platforms.

In this poster we will focus on the implementation and usage of the the VIIRS Environmental Data Record (EDR) sub-packages within CSPP, which are based on the Interface Data Processing Segment (IDPS) code as implemented by Raytheon in the Algorithm Development Library (ADL). VIIRS Scientific Data Record (SDR) files are ingested in HDF5 format and converted to the internal Binary Large Object (BLOB) files with matching text file metadata. The manipulation and handling of these BLOB files, the acquisition and conversion of the various ancillary data formats into the internal BLOB format, and the output VIIRS EDRs are described.

## Algorithm Development Library (ADL)

- The core of CSPP is ADL, a collection of pre-compiled C++ binaries for the various NPP Suomi sensor SDR algorithms, as well as for the derived products (e.g.: VIIRS Cloud Mask, AOT, SST ...), and the associated ancillary processing.
- The VIIRS EDR products are generated by running the executables `ProEdrViirs*Controller.exe`, the configuration options for which are read from a series of XML files.
- The XML file for a particular controller specifies input and output paths, as well as listing other controller executables which are prerequisites, such as the various ancillary controllers for granulating global gridded datasets.
- Typically an EDR product would be generated by first running the VIIRS SDR controller, which generates the VIIRS SDR (radiometric files and geolocation) from the Raw Data Records (RDRs). The SDR controller also encompasses the generation of the granulated ancillary data, which are then available to any subsequent Environmental Data Record (EDR) controllers such as for the VCM.
- For the standard setup, it is not easy to decouple the generation of the VIIRS SDR products and the generation of the ancillary data required by later EDR controllers. It is desirable to execute the SDR, ancillary and EDR generation as separate processes to aid in algorithm development and calibration/validation efforts.

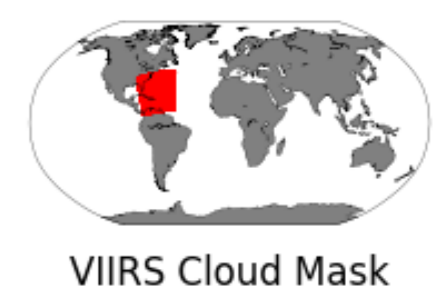
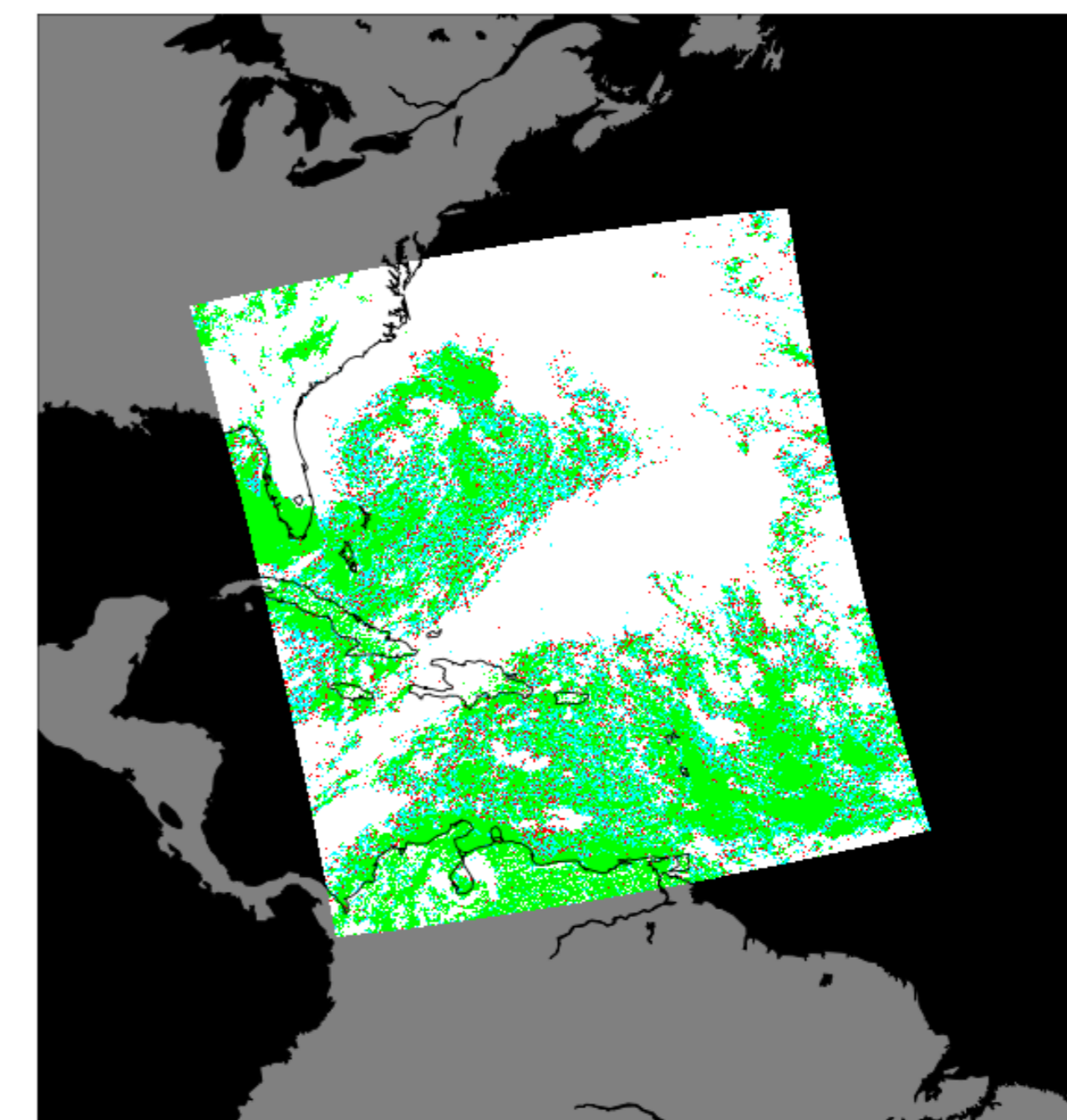
## CSPP Software Stack

- CSPP is a set of open source tools, primarily `python` and `bash` scripts and related tools, which configure the required inputs for ADL, and handle any required postprocessing of the outputs.
- A `python` script provides the required interface between the user and the required ADL controller, taking various command line options. The script uses these options to generate the required XML files which reflect these options, and configure the execution of the ADL controller.
- Central to the CSPP software stack is a custom `python` distribution called `ShellB3`. `ShellB3` is configured to contain only what is necessary for driving the various ADL controllers, and is intended to be a portable drop-in `python` environment for executing CSPP with little or no user setup.

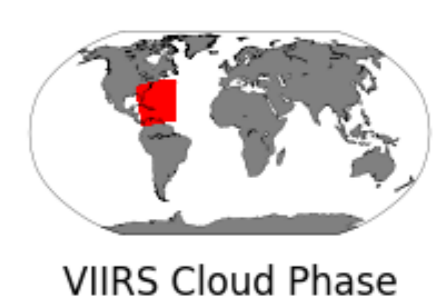
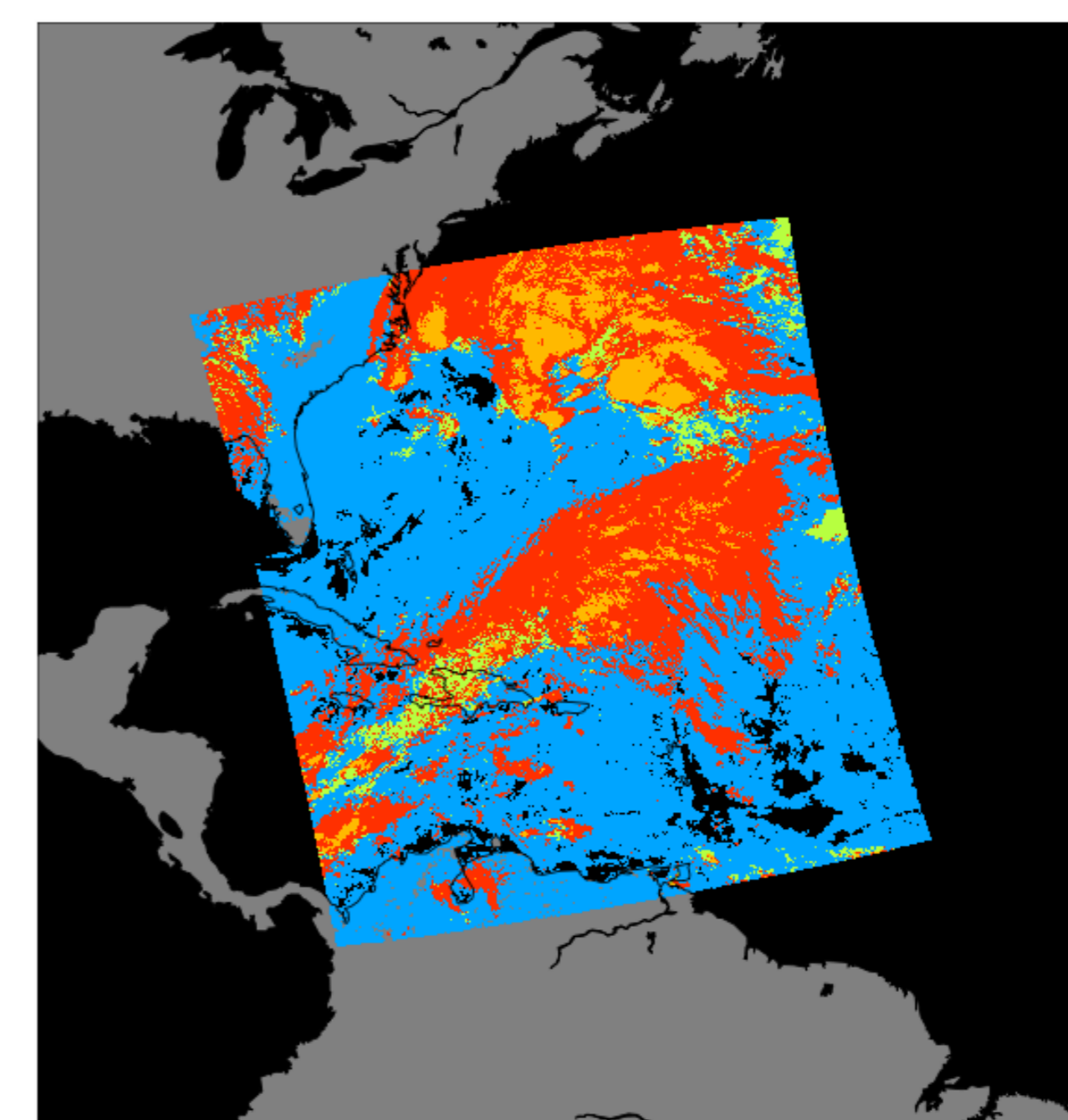
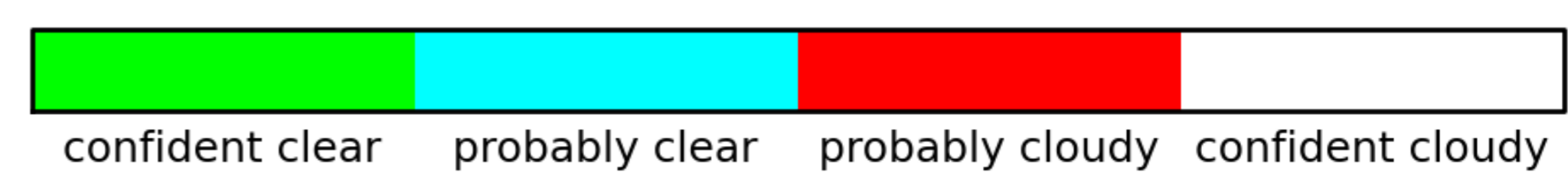
## Examples

- Shown from top right is a series of VIIRS EDR products generated from NOAA Operational VIIRS SDRs, using CSPP: VIIRS Cloud Mask (VCM), Cloud Phase (VCP), Aerosol Optical Thickness (AOT) and the Sea Surface Temperature (SST).
- Each of the subsequent EDR algorithms in CSPP depend on one or more prerequisites, in the order VCM,AOT,SST. CSPP examines the supplied list of VIIRS SDRs, and determines which of the various VIIRS EDRs can be generated.
- After the VIIRS EDR manifest has been generated, CSPP retrieves and granulates any required dynamic ancillary data, as well as any required static data sets.
- The CSPP VIIRS EDR package has a variety of command line switches to customize program behaviour. As examples, we can execute only the ancillary granulation, execute an entire EDR chain, or only execute a single EDR if the user has existing data from prerequisite algorithms.

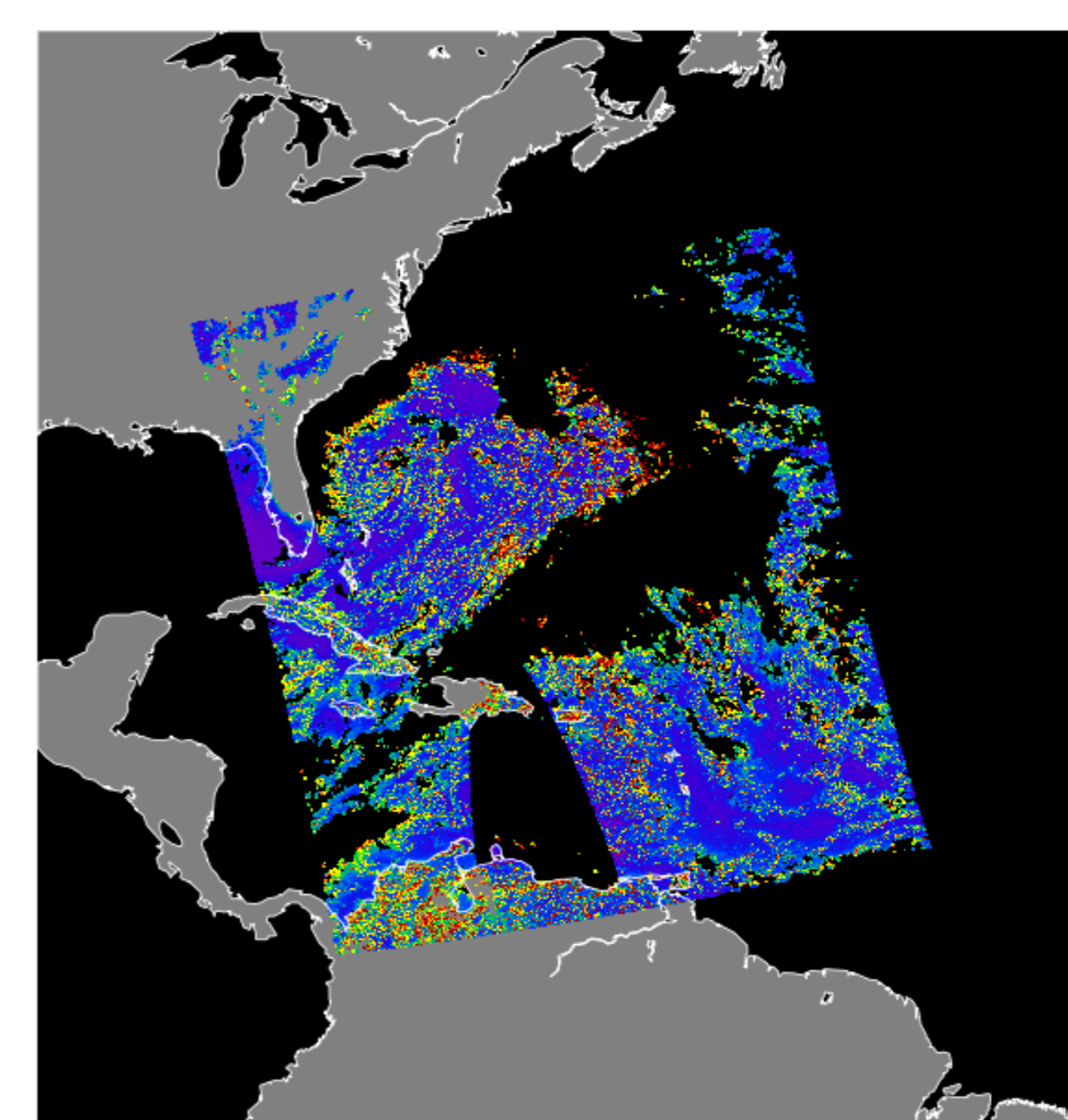
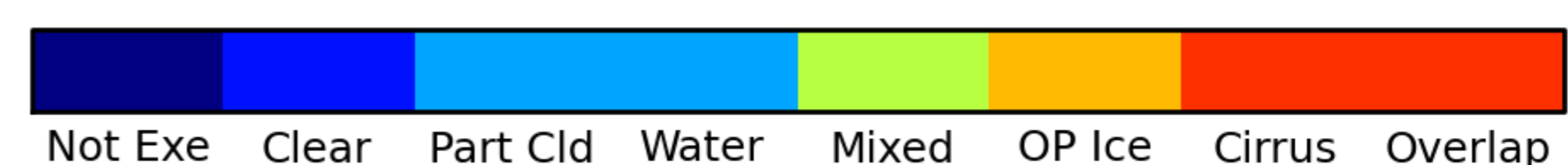
## VIIRS EDR Products from CSPP



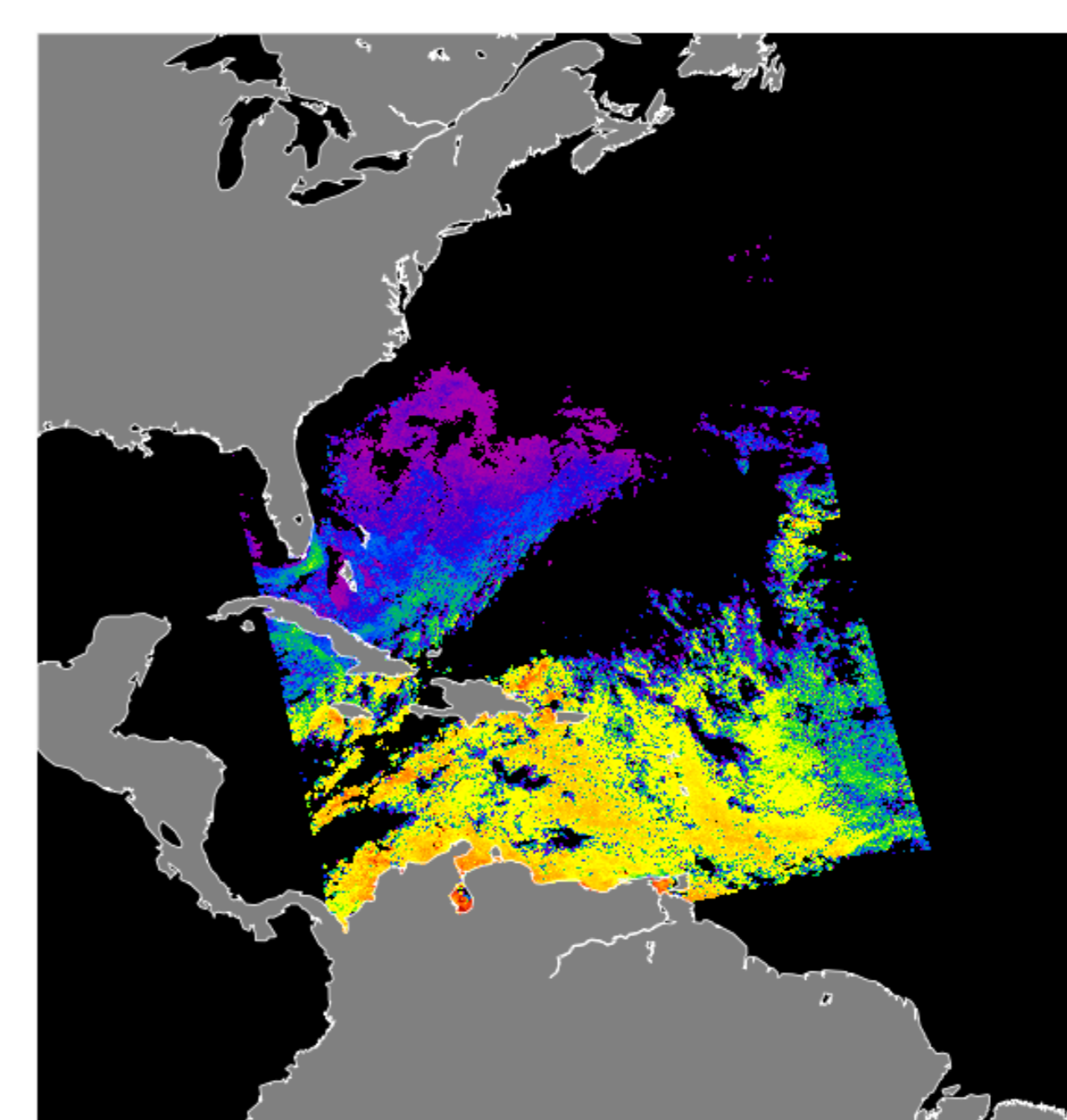
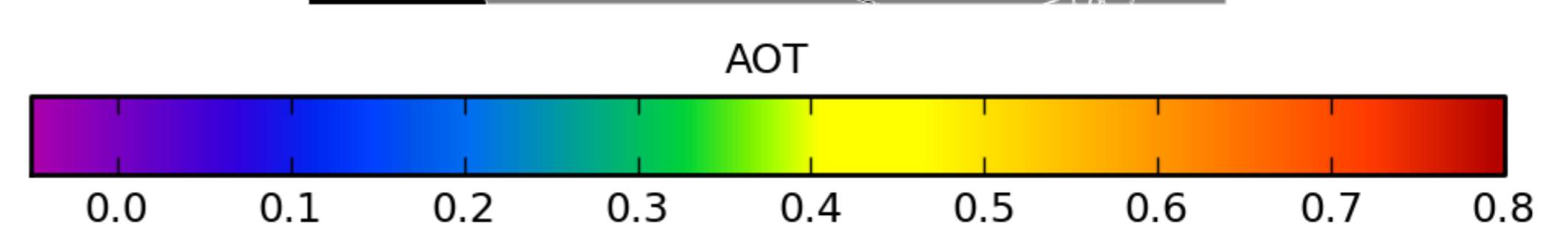
VIIRS Cloud Mask



VIIRS Cloud Phase



VIIRS AOT



VIIRS SST EDR

